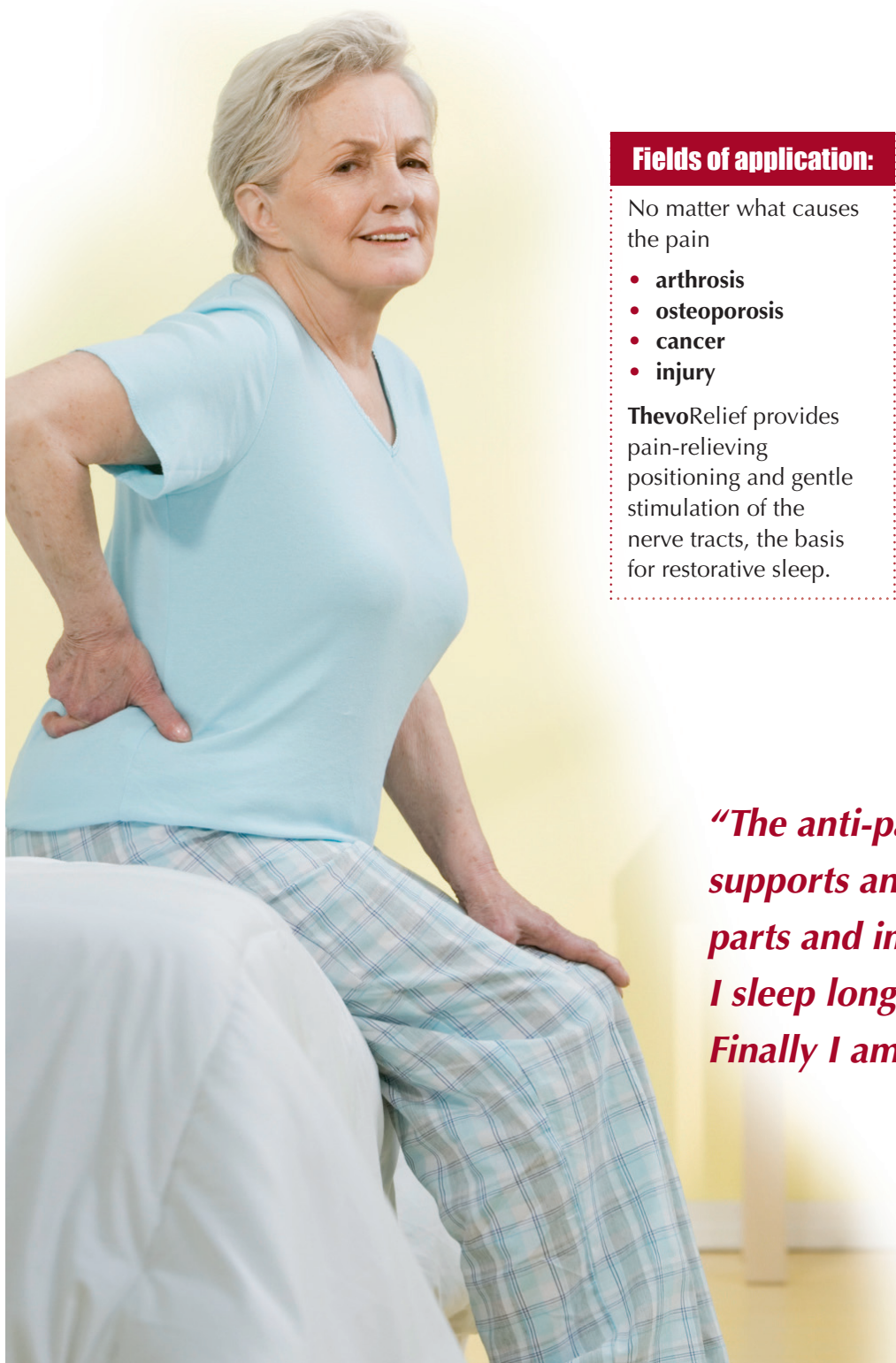


Pain Therapy

Lasting pain relief during the night

A horror story that is repeated every night: After just a few hours, pain becomes rife. Falling back to sleep is out of the question. Awakened in the middle of the night, the person enters a cycle of pain and sleeplessness.

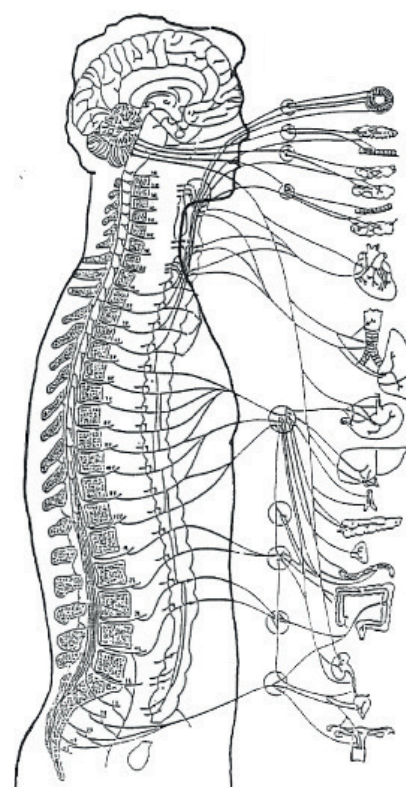


Fields of application:

No matter what causes the pain

- arthrosis
- osteoporosis
- cancer
- injury

ThevoRelief provides pain-relieving positioning and gentle stimulation of the nerve tracts, the basis for restorative sleep.



autonomic nervous system

“The anti-pain mattress, ThevoRelief, supports and soothes my aching body parts and improves my well-being. I sleep longer and better. Finally I am able to bear the pain.”

Improved sleep for well-being with the Pain Mattress

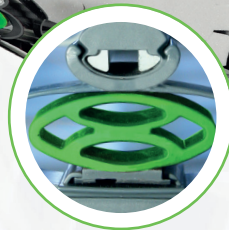
- ✓ MiS Micro-Stimulation® gently stimulates the nerve tracts
- ✓ Optimum back support
- ✓ Relieves body aches and painful lying
- ✓ Improved microclimate

Awarded:



Wing suspensions

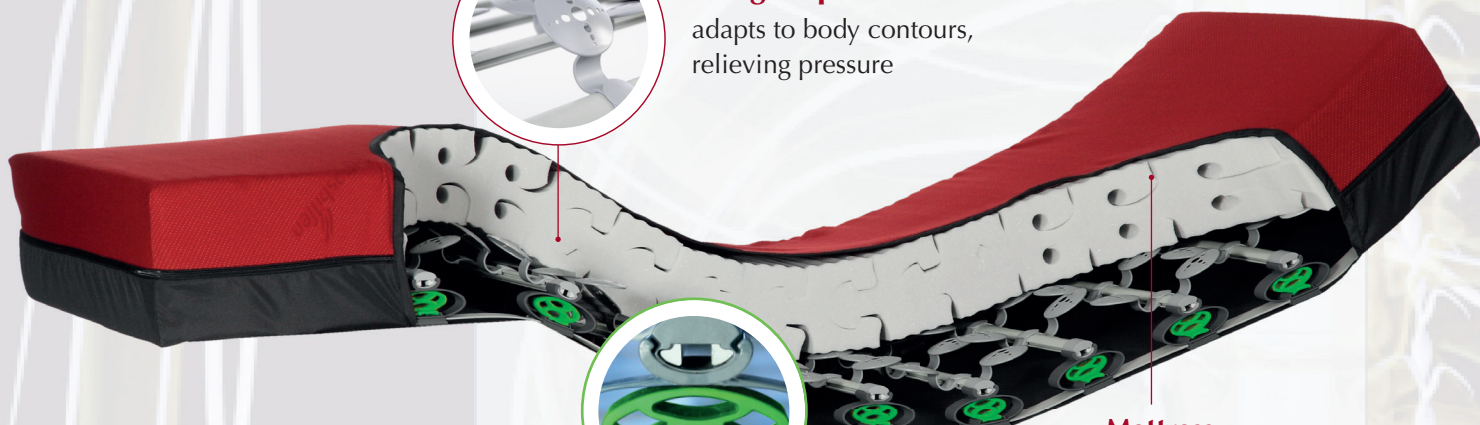
adapts to body contours, relieving pressure



Pain suspension

very soft sensation of lying → pain relief

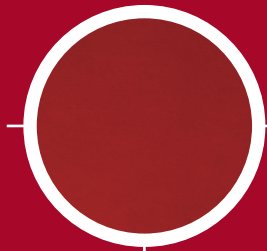
is optimally tailored to the sleep and lying demands of people suffering from pain



Mattress

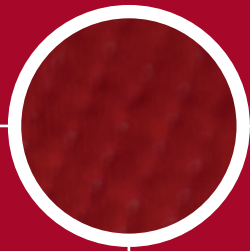
For maximum patient comfort

It is your choice!



Features: Incontinence cover

- breathable
- wipes clean with disinfectant



Features: Jersey cover

- good microclimate

Shared features:

- sewn zipper
- washable at 65°C / 149°F
- suitable for tumble dryers
- autoclavable
- suitable for re-use



Sizes: ThevoRelief

The Therapeutic Bed are available from in the following sizes:

| | | |
|---------------------|----------------------------|------------------|
| Hospital: 36" x 79" | Split Queen: 2 x 30" x 79" | Full: 54" x 75" |
| Twin: 39" x 75" | Split King: 2 x 38" x 79" | Queen: 60" x 79" |

You need a special size?

Contact us, we are happy to help!



Thomashilfen North America

309 South Cloverdale Street
Unit B 12
Seattle WA 98108, USA
P 206 763 0754
F 866.870.0801



Walkmühlenstraße 1
D - 27432 Bremervörde · Germany
Phone: +49 (0)47 61 / 886-63 or -68
Fax: +49 (0)47 61 / 886-19 · www.thevo.info



Thomashilfen 



ThevoRelief – The Therapeutic Bed for pain care

